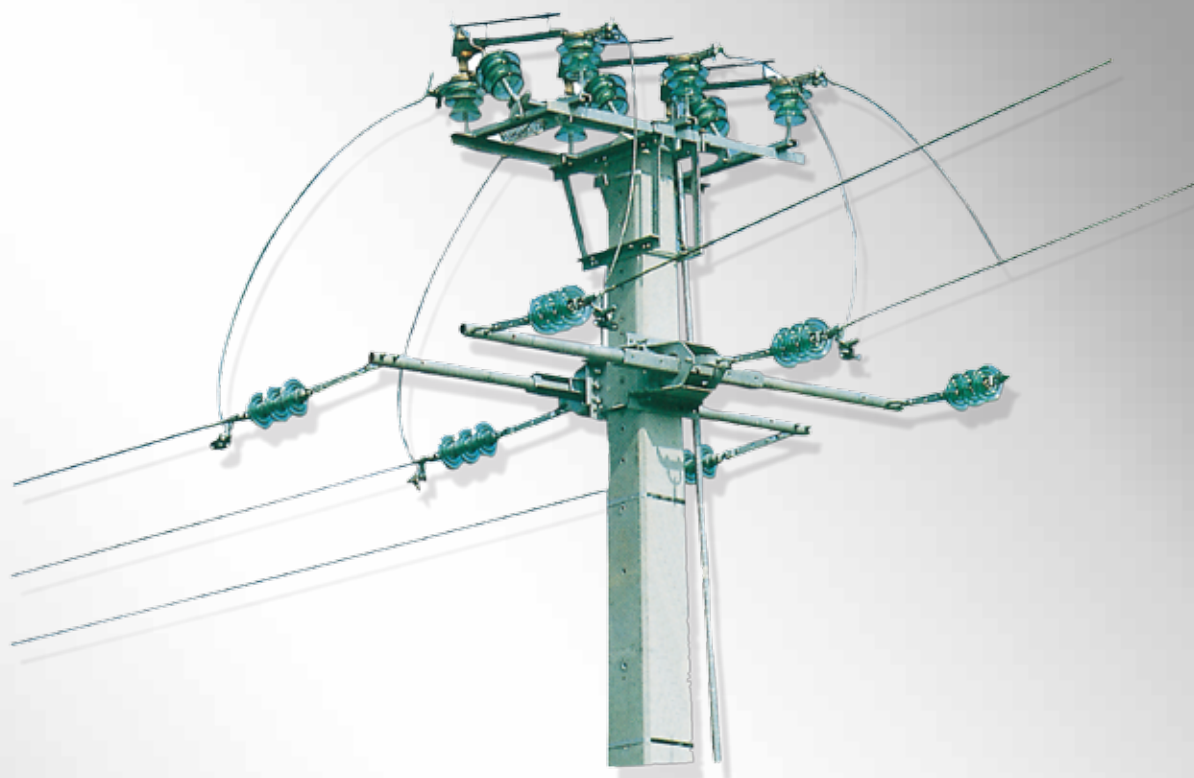




Saves Your Energy

IA1CM
24kV-50A

Overhead manual switch



IA1CM 24kV-50A

Overhead manual switch

Overhead switch IA 1 CM-50 A, installed at the end of the line, in a structured MV network, enables a group of stations to be isolated, so that line work can be carried out downstream. The switch meets the type I requirements defined by French standard NF C 64-140 of 01/1990.

Constructional details

- Hot galvanised steel strip chassis, compliant with standard NF A 91 121.
- Hinging: trunnion on bronze bush.
- Insulators: type RP5 in hardened glass. Insulator rods with identical sockets for the 9 insulators.
- Collars in aluminium bronze alloy.
- Blade in cold-worked copper, driven by self-lubricating nylon rollers. Its C section provides excellent short circuit strength and reduces overheating.
- Break contacts: high penetration and alignment tolerances, permanent contact zone separate from break contact.
- "Open" position perfectly visible. All live parts are solid stainless.
- Connection by cylindrical alloy pins, dia. 25 mm for working under voltage (TST).
- Whip cutout devices.
- Fast close device using spring, trumbler type, acting directly on the moving shaft without driving the control, which only initiates the motion.
- Rubber travel limit shaft stops.
- Support chairs comprising two symmetrical elements in galvanised, welded strip, allowing the switch to be clamped on any support with head dimensions between 100 and 360 mm.
- Isolating support per phase for the protection of birds.

Mechanical control



Designed to be banded onto an angle bracket mount.

The control comprises:

- a lockable control lever with insulation,
- a lower tube with insulation,
- two telescopic tubes, adjustable ± 300 mm, for mounting on supports from 11 to 14 m,
- three roller tube guides (a supplementary tube and tube guide can be supplied (extra) with supports from 15 to 18 m).

Other items

Specific assembly or other voltages (contact us).

LINKAGE			
for pole	ERDF P/N	Ensto Novexia P/N	
of 11/14 m	72 33 601	1009678	
Supplement	ERDF P/N	Ensto Novexia P/N	
15/18 m	72 33 602	1009763	



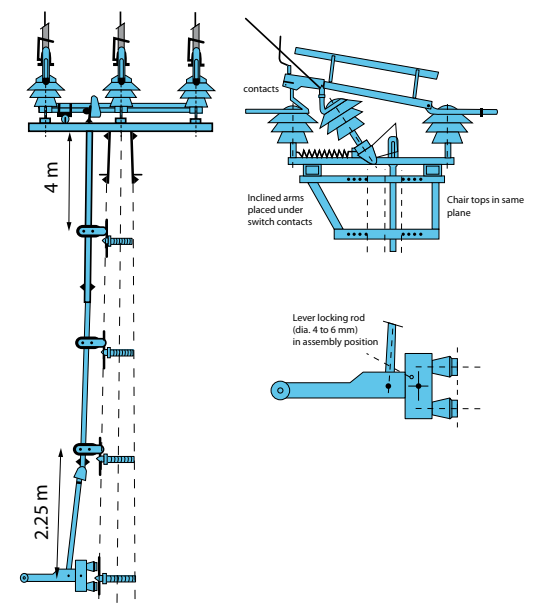
Saves Your Energy

Ensto Novexia SAS
210, rue Léon Jouhaux - BP 10446
FR - 69656 Villefranche-sur-Saône cedex
Tél. : 33 (0)4 74 65 61 61
Fax : 33 (0)4 74 62 96 57
E mail : infos.novexia@ensto.com
www.ensto.fr

Electrical characteristics

Voltage rating	24 kV
Current rating	200 A
Cutout power	<ul style="list-style-type: none"> • Mainly active load • Transformer off-load
	50 A 2,5 A 200 A / 4,8 kV
• Loop load	
• Line off-load	10 A
Number of poles	3
Insulators	Verre
Phase/earth isolation	
• on lightning strike	125 kV
• at 50 Hz in rain	50 kV
Short period current	10 kA/1s
Max. peak current	25 kA
Peak closing power under 24 kV	25 kA
Mountings	11/18m
Installation	Horizontal
Connection	Broches
Lightning strike isolation level	250 kV
Over opening distance at 50 Hz in rain	75 kV

Installation dimensions and weights



Element	Weight (kg)
Switch	128
chairs (2)	14
guides (3)	6
control system	5
Linkage	17
accessories	4

Switch - Guides - Control system

ERDF P/N	72 33 605
Ensto Novexia P/N	2002539