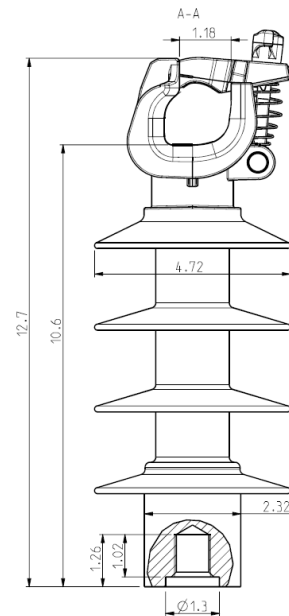




Composite Line Post Insulator

Medium Voltage Covered Conductor



Description

Ensto's composite line post insulators are designed for medium voltage distribution applications. They are available with either a top clamp or pin bolt for easy installation on the line. These insulators are designed with a durable and robust composite material.

Technical Data

General

Conductors:	1/0 – 400 kcmil
Conductor Diameter:	0.7 – 1.1 in
Creepage Distance:	20 in
System Rated Voltage:	24kV
Dry Impulse Voltage:	>156kV
Wet Power Frequency:	>72kV
Weight:	5.64 lbs
Height:	12.7 in
Cantilever Load (SCL):	2810 lbf

Product Information

Product Code

SDI82.2M206

Clamp Top Insulator

Features

- Durable in all weather conditions
- Insulated upper fittings protect covered conductors by eliminating partial discharges
- Composite material helps to reduce the concentration of the electric field around the insulator
- Clamp top design allows for installation without helical ties